

User Guide for Steinberg Cubase

Configuration guide for Windows and macOS to use with our Editor & Librarians



Intro

Configuration guide for Windows and macOS users to setup Steinberg Cubase for our Editor & Librarian.

This is universal tutorial for all our plug-ins. There are little differences between our plug-ins, but overall procedure is the same: Configure DAW MIDI ports, insert our plug-in, insert MIDI and Audio track(s) (if needed) and how to Automate the plug-in parameters.

We are using our Roland JP-80x0 Editor in this guide, so adapt the settings to your Editor as we go along.

Note #1: We are not Steinberg Cubase experts. Read the Steinberg Cubase user manual to fully understand your DAW.

IMPORTANT:

Make a full backup of your hardware before proceeding. Check your hardware user manual for instructions.

Disclaimer

Our company & product has nothing to do with Steinberg.
If there is an issue with our product, open a support ticket in your account page.
You can find support details at the end of this document.
Support and updates are free for life to anyone who has bought the license from our store

STEINBERG CUBASE

Preferences

Open your DAW and enter Studio Setup. Make sure that MIDI ports are disabled for those ports, where your synthesizer is connected at. This will ensure that our Editor is able to establish connection with the synthesizer.

This will also prevent getting double data in to the DAW processing loop.

Studio -> Studio Setup...



MIDI Port Setup

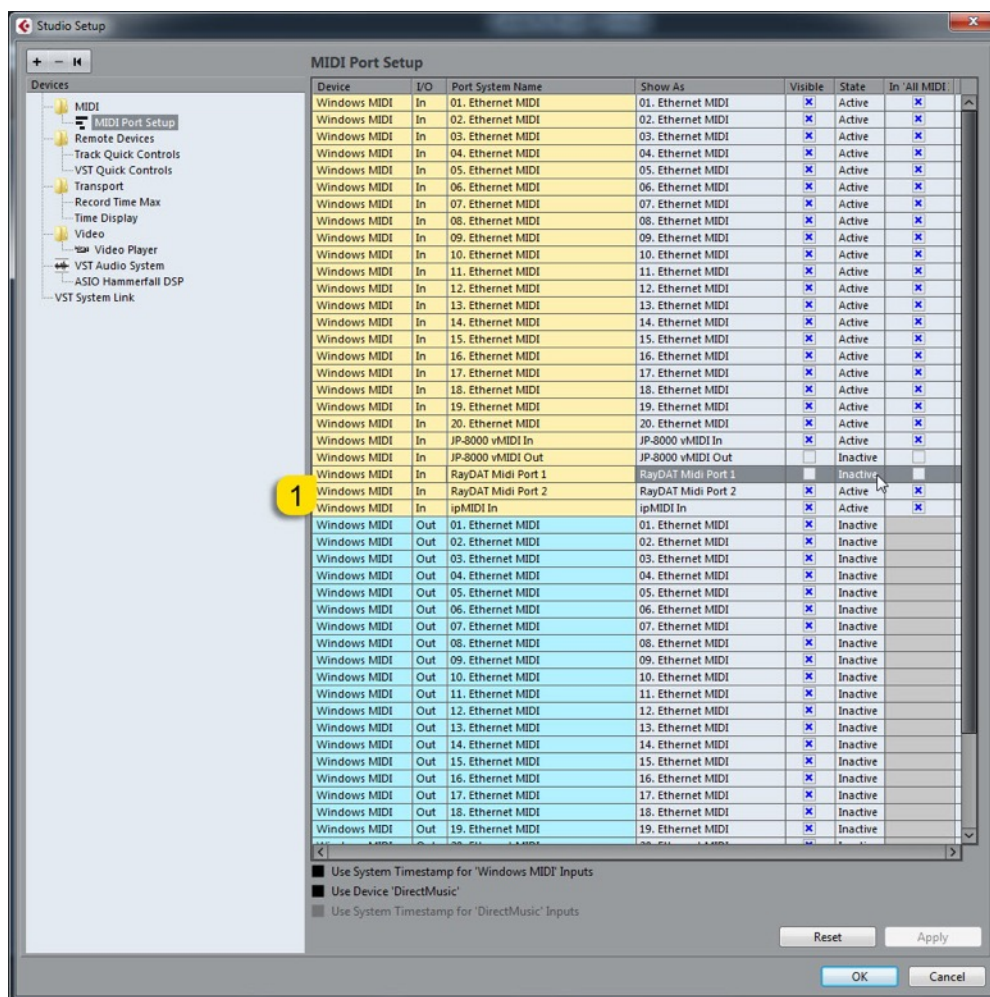
Open MIDI Port Setup tab in Studio Settings. Locate the Input port, which receives MIDI from your synth. Now check that the physical input port has **Visible** checkbox and **In 'All MIDI Inputs'** checkbox **toggled OFF**.

Example:

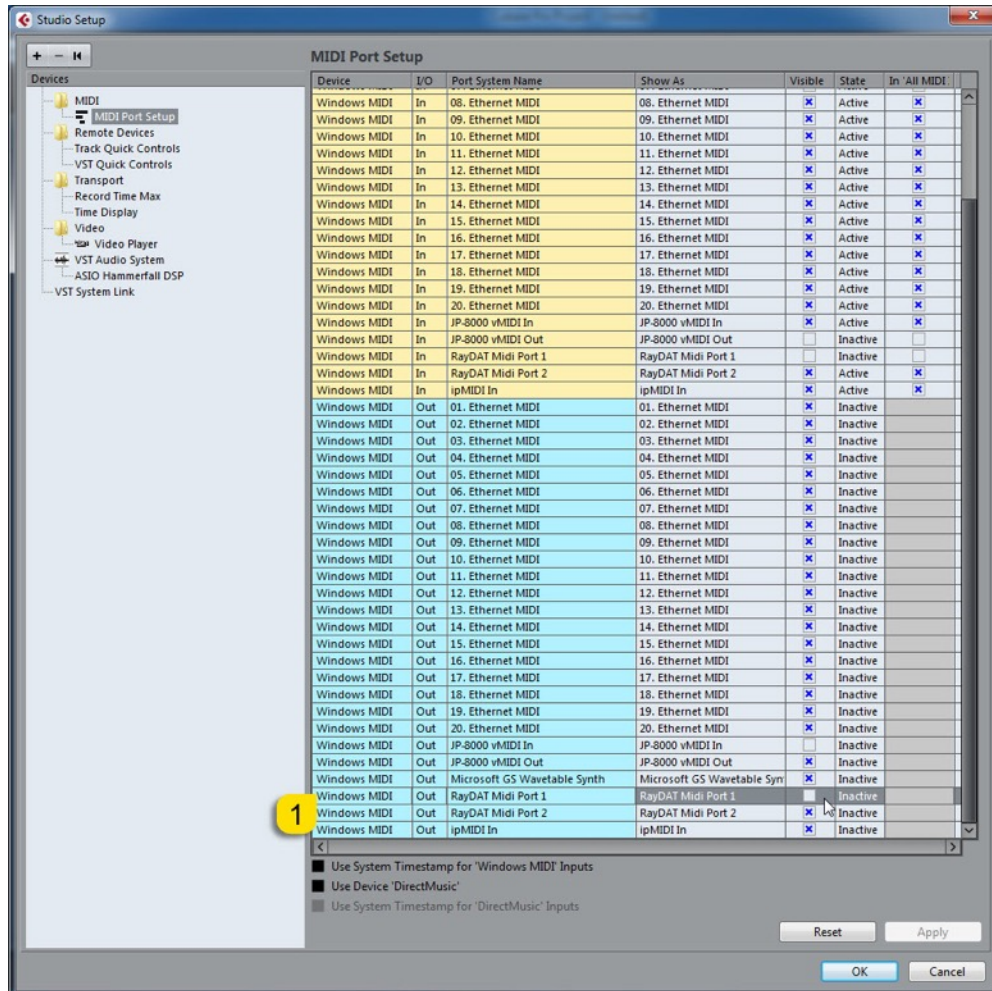
My JP-8000 MIDI Output is connected to RayDAT Port 1 [1] MIDI Input.
Toggle OFF all options in it.

Windows: Do the same for JP-8000 vMIDI Out we created in Setting MIDI Devices User Guide.

JP-8000 vMIDI In can have **Visible** and **In 'All MIDI Inputs'** toggle ON, so we get the notes to our DAW from the synthesizer itself!



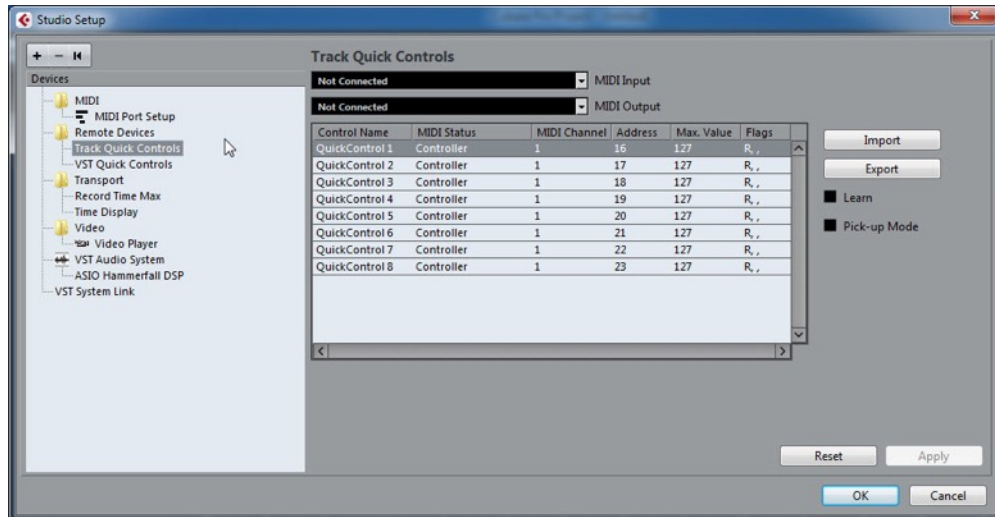
Windows: Now in the next image you can see how I have enabled JP-8000 vMIDI Out and you can also see how I have deactivated Output: RayDAT Port 1 which is important!



NOTE #1: You can check our support site for additional guides like Setting MIDI Devices to learn how we added JP-8000 vMIDI In and JP-8000 vMIDI Out ports in the DAW.

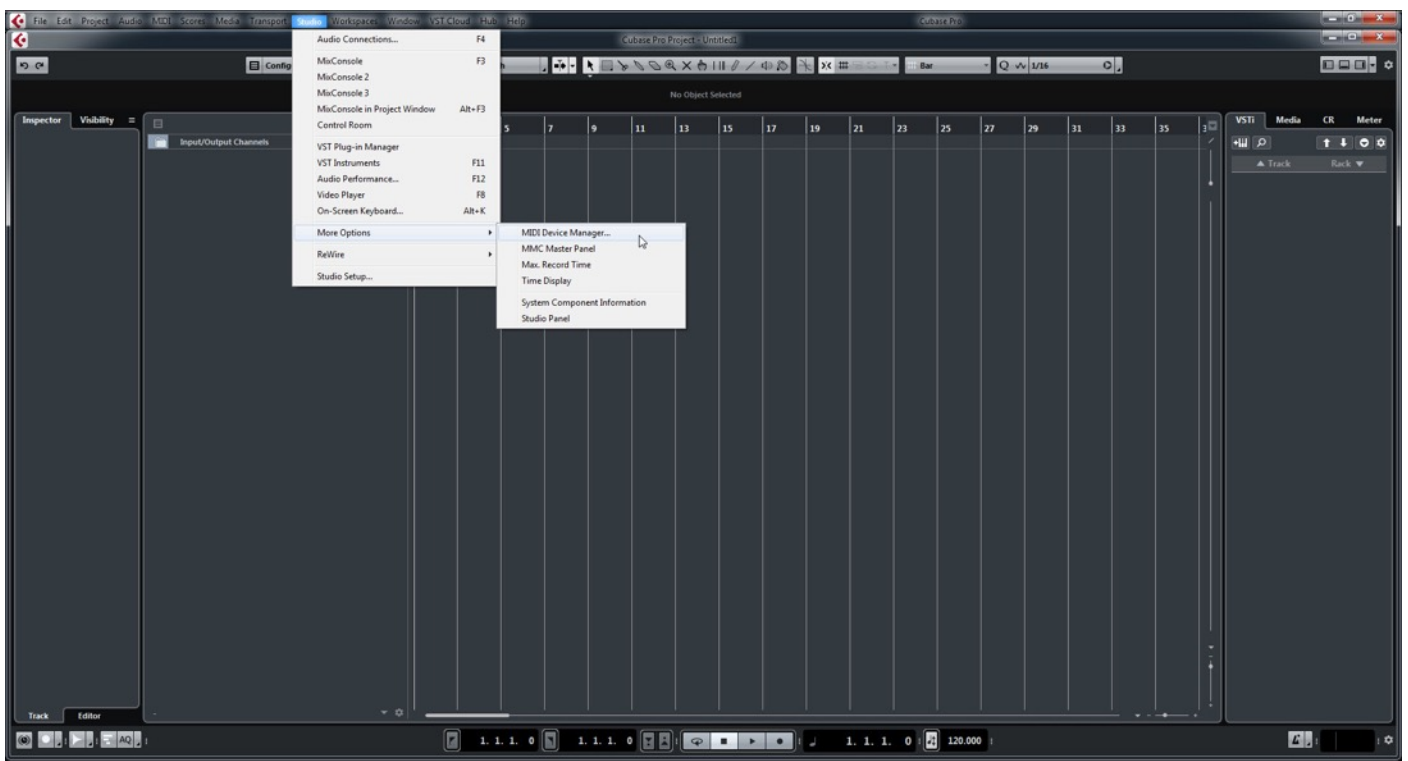
NOTE #2 Windows: If RME RayDat Midi Port 1 (in our case) would still indicate "Active" in the State-column, that would tell us that the port is still being used by Cubase somewhere in its settings. Therefore, we will show you where the port might be assigned below.

Check that the MIDI port where your synth is connected in, is not being used at “Track Quick Controls” and “VST Quick Controls” by MIDI Input / MIDI Output ports!



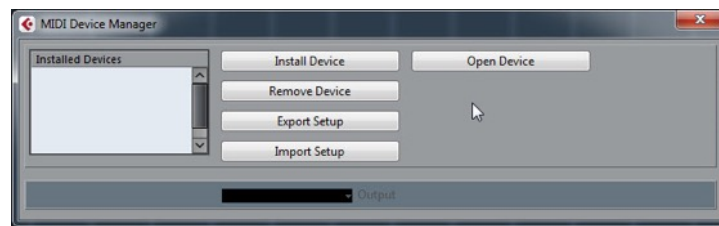
Now we can close Studio Setup!

Click Studio -> More Options -> MIDI Device Manager ...



Check your devices and make sure the Synthesizer port is not assigned in any of the devices.

In the picture below, you can see my list is empty, because I am not using Cubase for making music.



If you are sure that the port is not assigned in any of your Devices, we can close the window and add the plug-in to our project!

INSERT THE PLUG-IN

Click the + -sign in the arrangement window to reveal the menu. Choose Add Instrument Track...



Locate the plug-in you are using from the plug-ins drop down menu. See image below.



Plug-in window will now appear.



Select your Hardware model

Some plug-ins have ability to control multiple models from the same hardware-range. Choose your hardware model before moving forward. There are differences between models which makes the incoming data unique.

If model is not set properly, it might cause timed out messages and data is not properly handled in the hardware.

MIDI IN / MIDI OUT

Now we can select the Physical MIDI input port which receives MIDI data from your synthesizer.



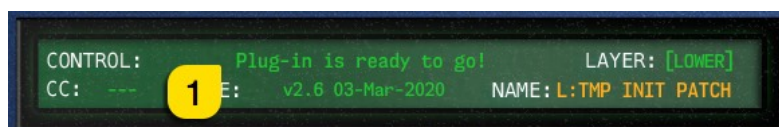
And then we choose the Physical MIDI Out port which sends data to the synthesizer MIDI input.



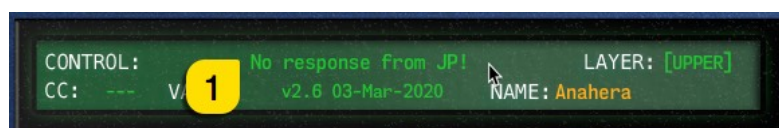
Plug-in will now attempt to establish connection with the synthesizer, so it might take some time if your settings are not right or if you chose a wrong MIDI port by mistake. You should see plug-in saying “**PROCESSING...**” somewhere in the plug-in interface and also **ABORT PROCESS** button will appear.



If all the settings are correct, you will see **Plug-in is ready to go! [1]** message in the plug-in display.



If something is wrong with your settings, plug-in will say **No response from JP! [1]** and that indicates something is wrong with your synth settings, MIDI device or Cubase Preferences.



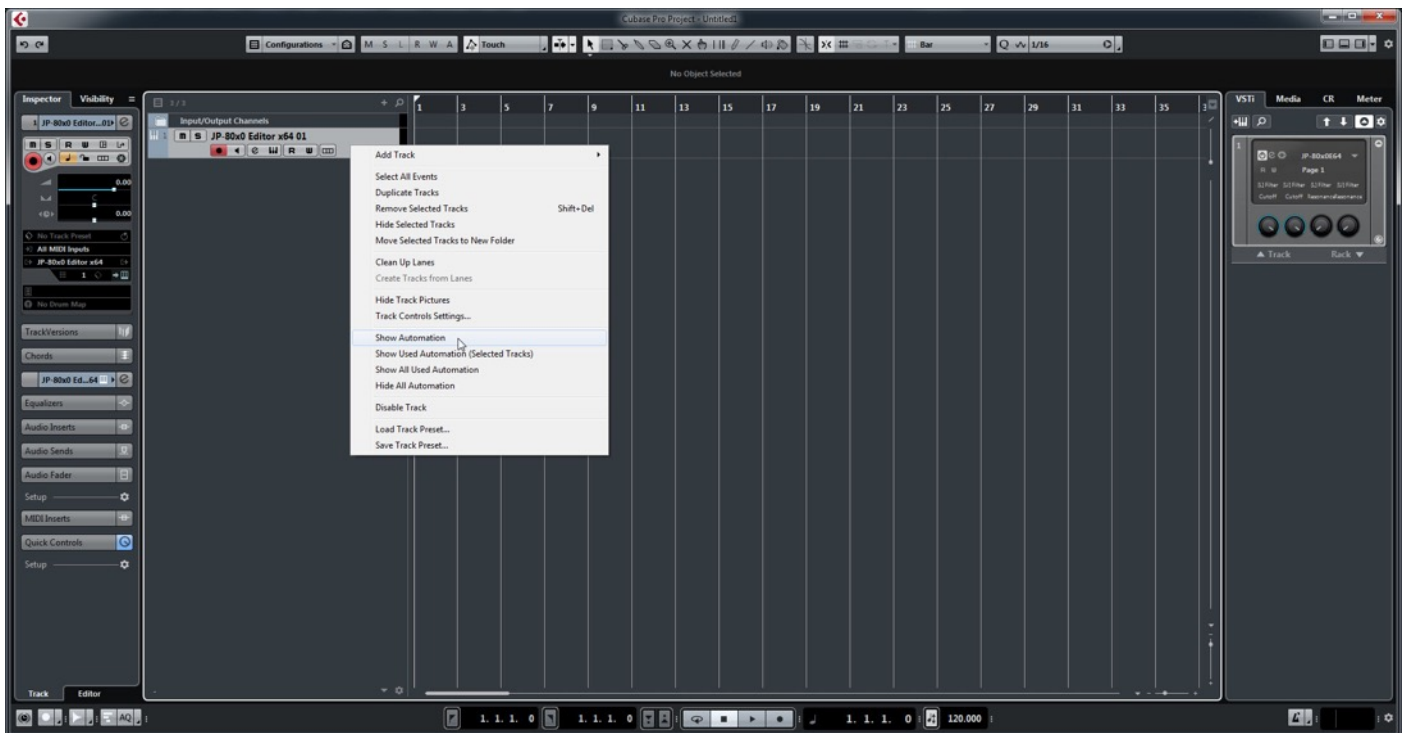
Once the connection is established, you should sync the data with your hardware. This function can be executed from the patch librarian tab / page of the plug-in & **Sync Data From HW** button. Check the Editor User Manual to learn more.

We can now close the plug-in window and move on.

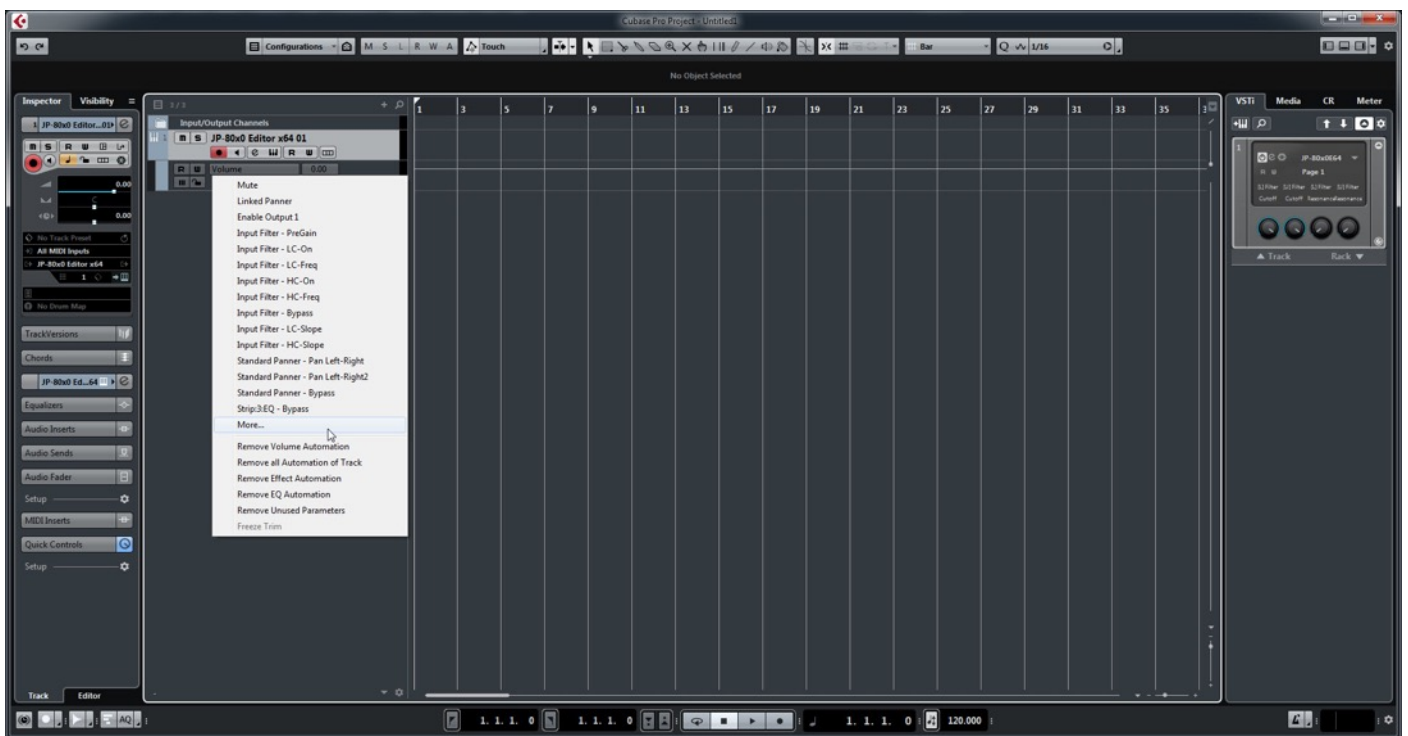
NOTE #1: Check troubleshooting from the editor, DAW or synthesizer manual if you cannot establish connection. You can also seek help from our support site if you can't find out what is causing error in your setup.

Automating Editor Parameters

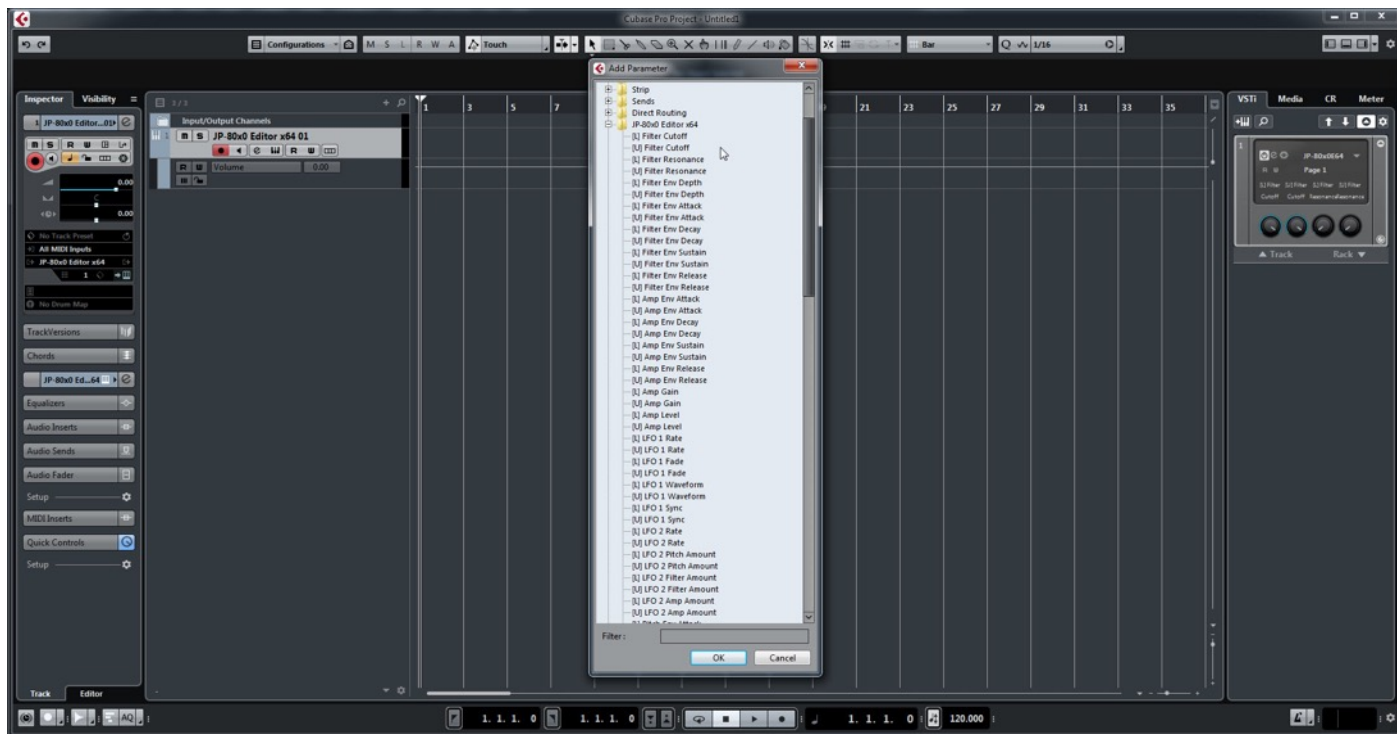
Right click on the plug-in instrument channel and select "Show Automation" See image below.



Now there is a new track below the instrument track indicating volume automation with lane on the arrangement. Click the Volume and a menu will be shown. Choose More... to start configuring our plug-in parameters.



Select parameter from the list which appears to show it in the arrangement.



Note #1: You can configure as many parameters as you wish. Some System Exclusive (SysEx) parameters and system buttons cannot be automated.

Note #2: If automation cannot be drawn by moving knobs from the hardware, you can automate parameters by moving the parameter from the plug-in user interface.

Start drawing in OR move the knobs in the plug-in while recording to make automation! Before you start to pursue with MIDI blocks, read the next chapter!

Assign MIDI tracks to Cubase Arrangement

In order to send MIDI notes to the synthesizer, we need to have MIDI tracks in the DAW.

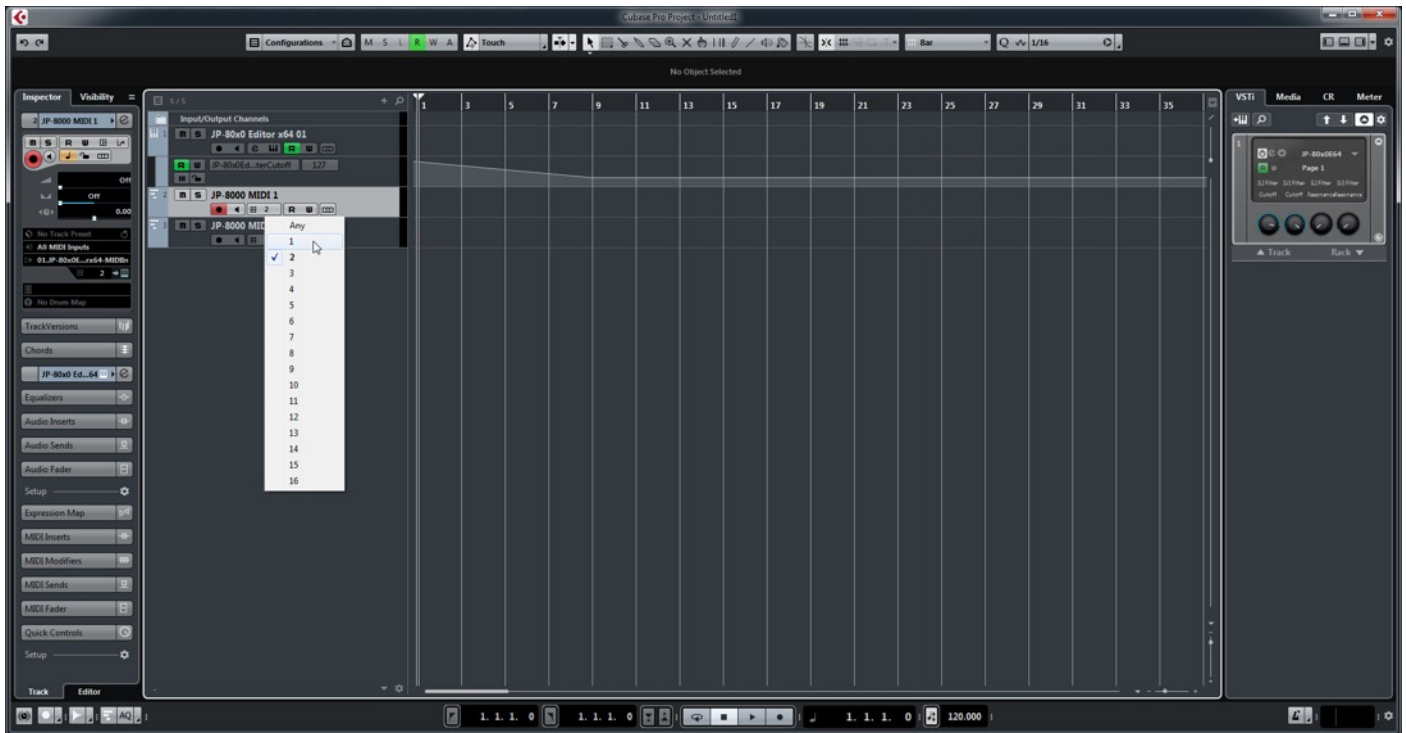
Click the + -sign in the arrangement window to show the menu again Choose Add MIDI Track...



Give the track a name which is appropriate for your setup. Choose number of MIDI tracks you want to add. I am going to add two MIDI tracks, one for each layer.



Assign MIDI Channels so that they match your synthesizer part / layer MIDI channels. I will change JP-8000 MIDI 1 to MIDI channel 1 and JP-8000 MIDI 2 to MIDI channel 2.



MIDI out is pointing to JP-8000 vMIDI Out, which I've created in our Setting MIDI Devices guide. macOS users can point the MIDI out directly to physical MIDI port of synth.



Note #1: If your synthesizer can do multitimbral setup, which most can do, then add more MIDI tracks and point them to respected MIDI channels.

Note #2: You can route MIDI output from MIDI tracks to the Instrument channel as well to experiment with DAW sync.

FINISHING IT UP!

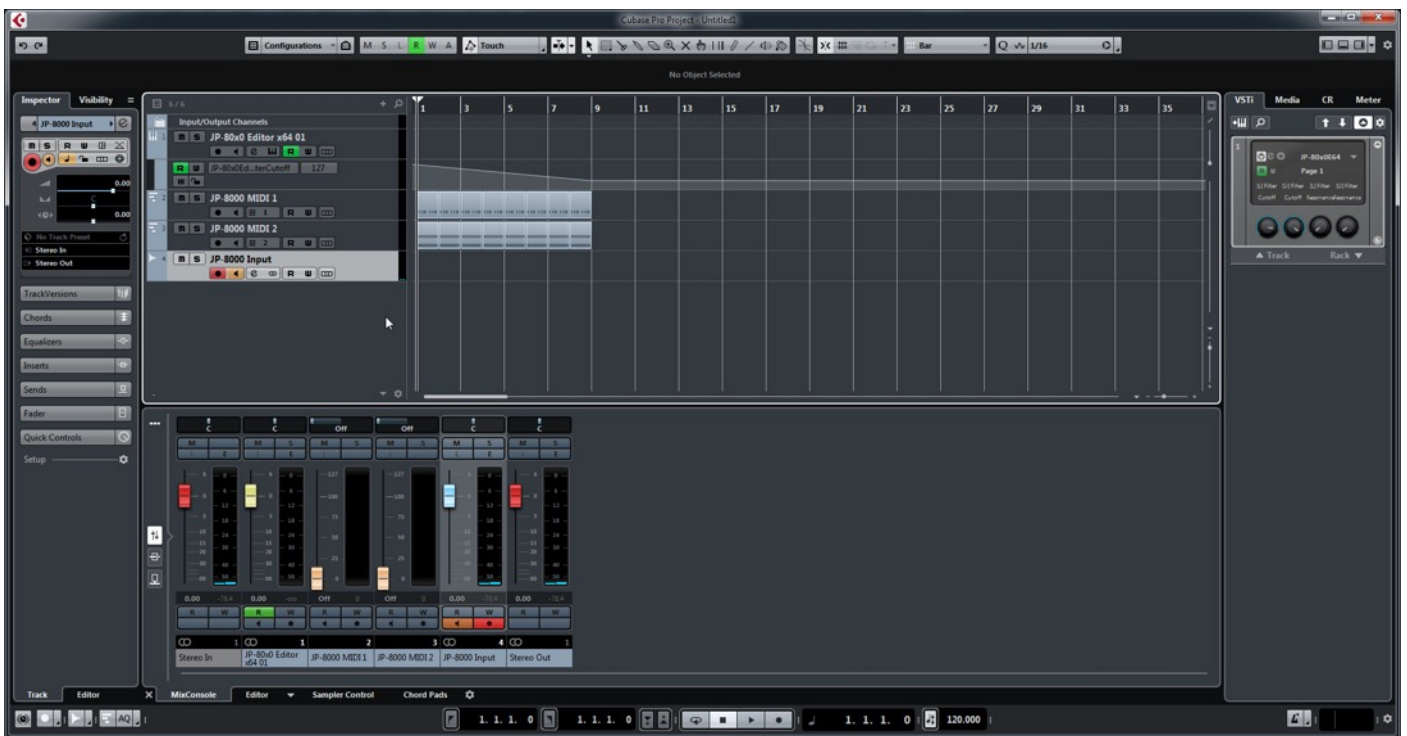
Final step is to add Audio track, so we can hear the synthesizer in action. Click the + -sign again and choose Audio Track.



Select appropriate Audio Inputs and Name your channel as required. Remember to select the inputs where your synth Audio Output is connected!



Toggle on Monitoring for the Audio Track to hear the Audio from your synth while making some MIDI blocks and you have some sort of automation (if needed).



Note #1: You might have routed your Audio Output from the synth itself to external mixing desk or speakers, so make sure you power those units on. Otherwise, there won't be any sound because our plug-in does not transmit any audio data to the DAW.

That's it for the Steinberg Cubase user guide. We hope you find this useful.

ADDITIONAL SOURCES

loopMIDI and MIDI-OX are both shipping their own user manuals, so please refer to their documentary to learn more about how they work.

If you have any questions about the product, you can reach us online from our website at <https://auraplugins.com> – or Join our amazing [Discord](#) community!

We are open for new feature requests, roses and surely, we would love to know if we've done something wrong as well!

If you would like to contribute and help our development work, head to our Ko-fi page and support us there – That would be super helpful and keep the business alive.

<https://ko-fi.com/auraplugins>

TABLE OF CONTENTS

User Guide for Steinberg Cubase - 1 -

 Intro..... - 1 -

Steinberg Cubase..... - 2 -

 Preferences - 2 -

 MIDI Port Setup - 3 -

Insert the plug-in - 6 -

 Select your Hardware model - 8 -

 MIDI IN / MIDI OUT..... - 8 -

 Automating Editor Parameters..... - 10 -

 Assign MIDI tracks to Cubase Arrangement..... - 12 -

Finishing it up!..... - 14 -

Additional Sources..... - 16 -